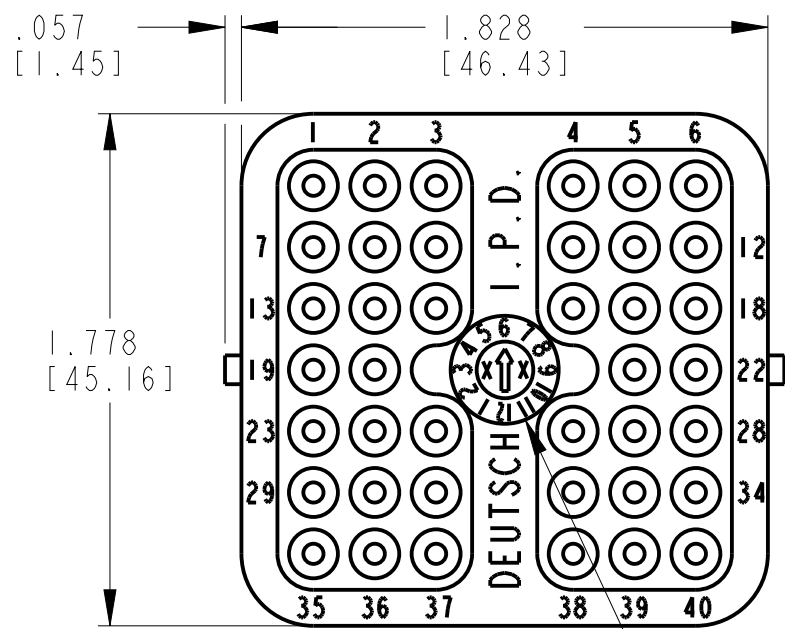


REV  
C     **AEC16-40S \***

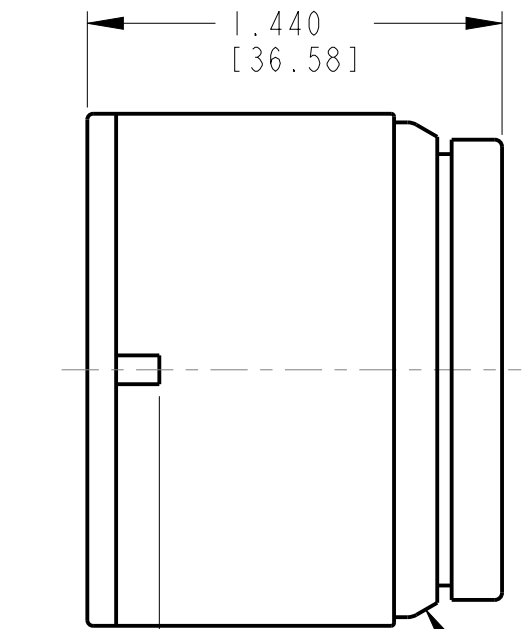
REVISIONS			
SYM	DESCRIPTION	DATE	APPROVED
NC	NEW RELEASE PER E.O. P17539	11-20-01	R.D.R.
A	REVISED PER E.O. P17720	4-12-02	R.D.R.
B	REVISED PER E.O. P20131	7-29-10	R.D.R.
C	REVISED PER ECO-13-005317	11-8-12	D.M.



.057  
[1.45]

1.828  
[46.43]

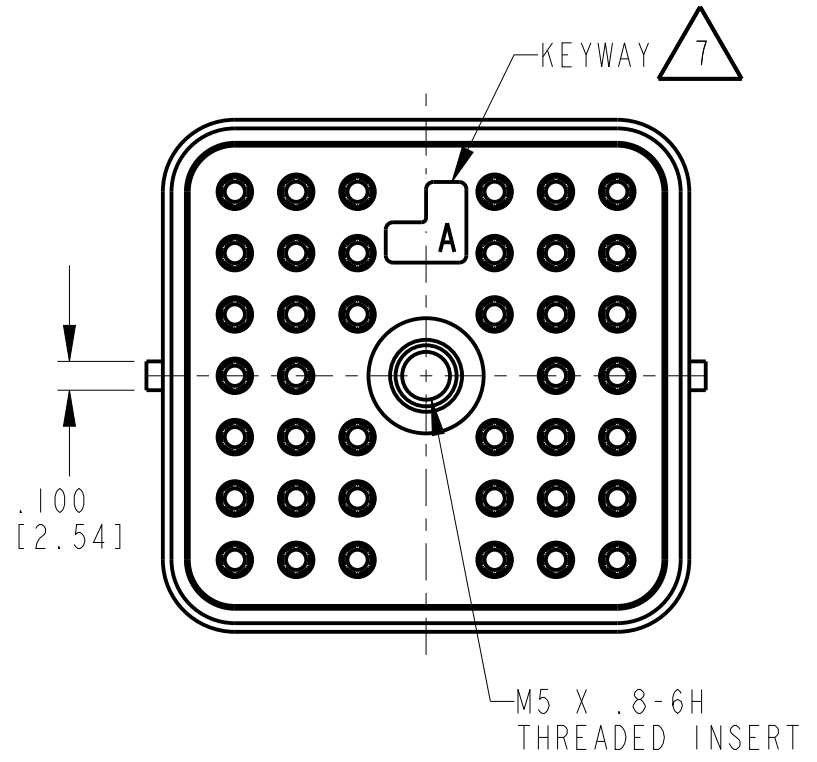
1.778  
[45.16]



1.440  
[36.58]

.150  
[3.81]

INTERFACE SEAL



.100  
[2.54]

M5 X .8-6H  
THREADED INSERT

- 7. SEE SHEET 2 FOR OTHER KEY ARRANGEMENTS.
- 6. MATERIAL- PLUG: PLASTIC; SEAL/GROMMET: RUBBER; THREADED INSERT: STEEL.
- 5. THIS PLUG MATES WITH AEC14-40P\*-\*\*\*\* AND AEC17-40P\*-\*\*\*\* RECEPTACLE. (\*=A,B,C,D KEYS; \*\*\*\*=ALL MODIFICATIONS). CONSULT FACTORY FOR MODS.
- 4. FOR CONTACTS AND WIRE PERFORMANCE AND APPLICATION CHARACTERISTICS, SEE ENVELOPE DRAWING 0425-015-0000.
- 3. PLUG SUPPLIED WITH DUST CAP. (NOT SHOWN).
- 2. DIMENSION TOLERANCE: ±.025 [.635].
- 1. DIMENSIONS ARE IN INCHES [mm].

NOTES:

MIN. INSUL. OD [mm]	MAX. INSUL. OD [mm]	WIRE RANGE [mm <sup>2</sup> ] REF ONLY
.100 [2.540]	.134 [3.404]	14-20 AWG [2.0-0.50]

SIGNATURE & DATE	
DR	J. APOSTOL 05NOV2012
CHK	D. HASIBUAN 11/7/12
PE	D. HASIBUAN 11/7/12
APPD	D. MEYER 11/8/12
SCALE	NONE
WT	—

**PLUG**  
**40 SIZE 16**  
**KEYS: A,B,C,D**  
**AEC SERIES**

ENVELOPE

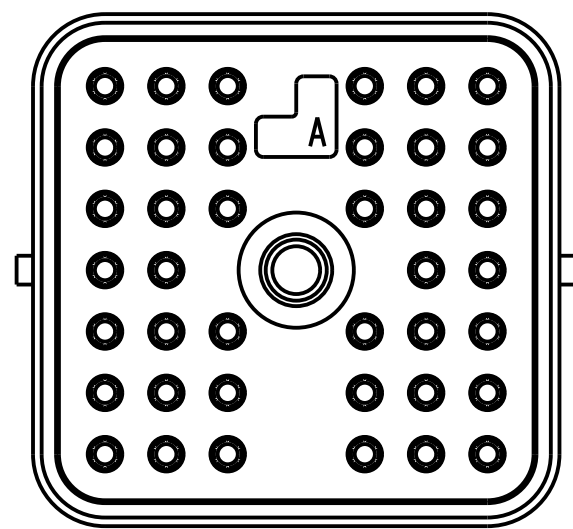
EP	MATL. CODE
 3850 INDUSTRIAL AVE. HEMET, CA 92545	
B	AEC16-40S *
DWG SIZE	CODE 11139 SHEET 1 OF 2

REV  
C

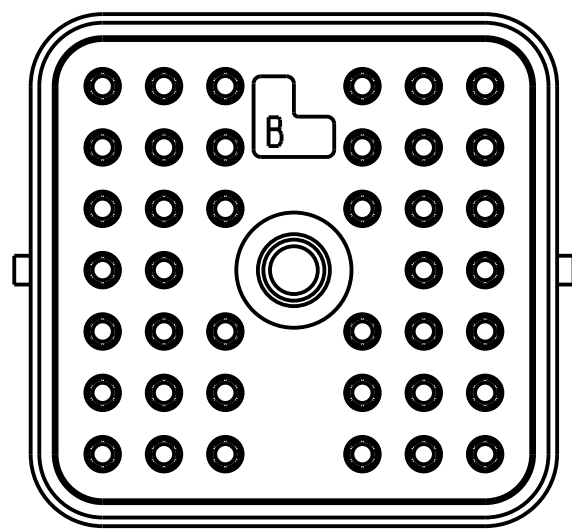
AEC16-40S\*

REVISIONS

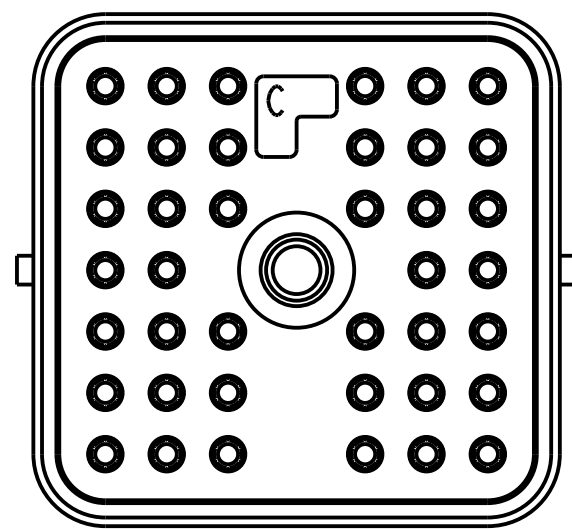
SYM	DESCRIPTION	DATE	APPROVED
C	SEE SHEET 1	11-8-12	D.M.



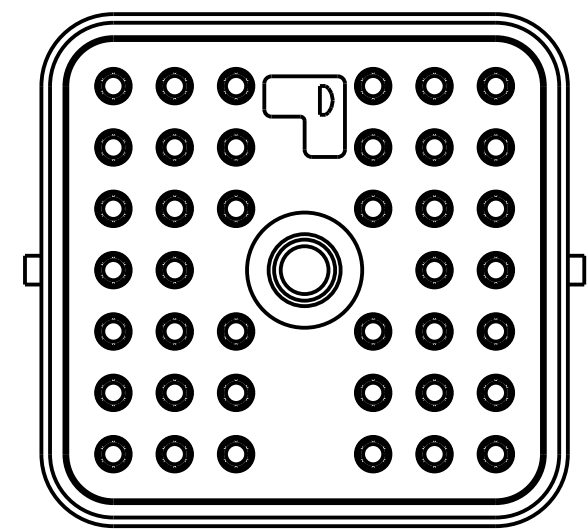
AEC16-40SA  
KEY 'A'



AEC16-40SB  
KEY 'B'



AEC16-40SC  
KEY 'C'




AEC16-40SD  
KEY 'D'

NOTES:

SIGNATURE & DATE	
DR	J. APOSTOL 05NOV2012
CHK	D. HASIBUAN 11/7/12
PE	D. HASIBUAN 11/7/12
APPD	D. MEYER 11/8/12
SCALE	NONE
WT	—

PLUG  
40 SIZE 16  
KEYS: A,B,C,D  
AEC SERIES

ENVELOPE

EP	MATL. CODE
 3850 INDUSTRIAL AVE. HEMET, CA 92545 <b>DEUTSCH</b> INDUSTRIAL	
<b>B</b>	<b>AEC16-40S*</b>
DWG SIZE	CODE 11139 SHEET 2 OF 2

